



To: Executive Councillor for Public Places:
Councillor Andrea Reiner
Report by: Director of Environment
Relevant scrutiny Environment Scrutiny 8/10/2013
committee: Committee
Wards affected: All Wards

DEVELOPER CONTRIBUTIONS: SECOND PRIORITY-SETTING ROUND Not a Key Decision

1. Introduction

- 1.1 Developer contributions are payments received by the council from property owners or developers to help address the impact of greater demand for facilities arising from development in the city. Alongside the council's approach to devolved decision-making for the local use of developer contributions, half the payments from major developments are assigned to a city-wide fund. This is for strategic projects to create or improve facilities that would benefit residents from more than one area of the city.
- 1.2 Following the first priority-setting round in late 2012/early 2013, the next round is now underway. This is planning ahead for the next set of projects to be taken forward once first round and on-going projects are completed. This report invites the Executive Councillor to identify second round strategic priorities for the contribution types in the Public Places portfolio (informal open space, play provision for children & teenagers, public art and public realm). As the Executive Councillor oversees developer contributions processes as a whole, the report also gives an overview of how the second round is progressing.
- 1.3 The main messages from the second round so far are that:
 - a. good progress is being made towards the delivery of projects, with more projects now completed;
 - b. area committee short-listing is going well with an improved process (learning from experience of the first round) and local Members focussed on meeting the particular needs of their own areas;
 - c. there are fewer options for second round strategic priority-setting given the extensive allocation of city-wide funding in the first round;
 - d. the changing profile of developer contributions available across the area committees and contribution types is prompting new requests for supplementing devolved funds with city-wide funding.

2. Recommendations

It is recommended that the Executive Councillor for Public Places:

- 2.1 allocates a further £27k of public art developer contributions from the city-wide fund to the 'Cambridge Rules' project on Parker's Piece;
- 2.2 allocates £39k of public realm developer contributions from the city-wide fund towards lighting for Parker's Piece;
- 2.3 notes the consultation feedback & officer comments on other strategic project ideas for Public Places (see Table 3 and Appendix C);
- 2.4 identifies any particular follow-up actions needed to build on the progress so far in the second priority-setting round over the use of developer contributions (see section 5).

3. Background

- 3.1 An overview of the council's approach to developer contributions and devolved decision-making was featured in the report to this Committee last June (especially pages 20-22). More details can be found on the Developer Contributions web page (www.cambridge.gov.uk/s106), which has been updated and streamlined following feedback from Committee members. This now includes a flow-diagram of the devolved decision-making process.
- 3.2 The city-wide fund of developer contributions for strategic projects is based on half the contributions from major applications approved by the council's Planning Committee. A first set of strategic priority projects (see Table 1) was agreed by the relevant Executive Councillors last January, when over £950,000 of city-wide funding was allocated.
- 3.3 Last June, this Committee noted the process for the second priority-setting round for local and strategic projects (a one-page summary of is included as Appendix A of this latest report). Since then, considerable progress has been made.
 - a. Recently completed, developer contribution-funded projects include: Arbury Community Centre small hall, the community hub at Cherry Hinton library and Petersfield and Flower Street play areas. Improvement works to Jesus Green play area are also under way.
 - b. First round priority projects are moving forward through consultations, planning applications (as appropriate) and project appraisals. Some have already started on site (eg, strategic projects at Paradise local nature reserve (LNR), Cherry Trees Centre and the Centre at St Paul's).

Table 1: First round strategic priorities & current city-wide allocations

| Strategic priorities | £k | Contribution types |
|-----------------------------|-----------|------------------------------------|
| Logan's Meadow LNR | 160 | Informal open space |
| Paradise LNR | 100 | Informal open space |
| Jesus Green drainage | 105 | Informal open space |
| Parker's Piece public art | 88 | Public art |
| Extend St Andrew's Hall | 140 | Community facilities |
| Centre at St Paul's | 50 | Community facilities |
| Cherry Trees Centre | 44 | Community facilities |
| Play supplement: North | 47.5 | Play provision |
| Play supplement: East | 42.5 | Play provision |
| Rouse Ball Pavilion | 185 | Outdoor sport/community facilities |

- c. Developer Contributions newsletters for each Area were produced last July, providing an update on project progress and inviting updates and comments on project ideas ahead of the second round. These newsletters were distributed to those who took part in the autumn 2012 area workshops as well as to residents' associations, and are also available on the Developer Contributions web page.
- d. Refreshed lists of project ideas and responses to the recent consultation have been reported to the area committees in September and early October, alongside updates on the devolved funding available. This has helped the area committees to draw up their short-lists. More details can be found on the Developer Contributions web page. Profiles of the short-listed options (which are not yet guaranteed funding) will be compiled so the area committees can select their priorities at future meetings.
- e. A report on strategic project ideas relating to community facilities and outdoor and indoor sports contributions, with recommendations for the Executive Councillor for Community Well-being, will be considered by the Community Services Scrutiny Committee on 10 October. Further details can be found in this current Environment Scrutiny Committee report under paragraph 5.6 and Appendix E.

4. Strategic project options for use of city-wide contributions

- 4.1 Priority-setting needs to be set firmly in the context of the levels of developer contributions available. That is, the project ideas that are prioritised will have to be affordable within the unallocated funding already received in the appropriate contribution types.
- 4.2 Of the £950k or so of allocations of city-wide developer contributions funding to first round strategic priority projects last January, over £540k relates to developer contributions in the Public Places portfolio. Whilst some more payments have been received over the last nine months, the level of city-wide funding is currently still relatively low for some contribution types.

Table 2: Available city-wide developer contributions (Public Places)

| | | | |
|---------------------|-------|--------------|-------|
| Informal open space | <£25k | Public art | £25k |
| Play provision | <£25k | Public realm | £100k |

Rounded down to nearest £25k

- 4.3 That said, over £75k of informal open space contributions and over £100k of play provision contributions are expected to arrive in the city-wide fund shortly as these agreed payments have recently been triggered by a major development in the South Area.
- 4.4 The first part of Appendix B sets out key S106 conditions relating to available contributions in the city-wide fund. Previous allocations to already prioritised/approved projects mean that there are no unallocated contributions with expiry dates (for contracts to be put in place) before July 2015.
- 4.5 The refreshed list of proposals for city-wide funding relating to Public Places is set out in Table 3 and a summary of relevant consultation replies can be found in Appendix C. (Appendix D also summarises comments from the Disability Consultative Panel.) The commentary in Table 3 highlights that the main opportunities now available would be to prioritise:
- a further £27k (currently available) of public art contributions to supplement the £88k already allocated to the 'Cambridge Rules' public art project on Parker's Piece (PP7);
 - £39k public realm contributions towards the Parker's Piece lighting project [PP11].

Appraisals for these projects are reported separately at this meeting.

Table 3: Overview of refreshed list of strategic project ideas

| No. | Project ideas | Funding request | Commentary |
|----------------------------|---|--|--|
| INFORMAL OPEN SPACE | | | |
| PP1 | Turn Coleridge lakes into a country park/nature reserve | £37k for research, prior to multi-million £ project) | Insufficient funding. Not ready to be considered: relates to proposals in the draft Local Plan (still to be tested). Stand-alone feasibility studies not eligible for S106 funding. |
| PP2 | Create Green Corridor from Cherry Hinton Hall to Newmarket Road | Likely to exceed city-wide funds | Insufficient funding for large scale project. More detailed proposal awaited from Friends of Cherry Hinton Brook, but this is not ready to be considered in the second round. |
| PP3 | Improve pathways on Midsummer Common | Proposal not yet developed | Insufficient funding. Not ready to be considered in the second round. Creating additional paths would be eligible, but just improving surface (maintenance issue) wouldn't be. |
| PP4 | Cambridge Open Air Theatre (eg, for theatre, music, dance, puppetry). | Proposal not yet developed | No clear proposals (eg, location) Not ready to be considered. Mixed consultation response. If proposal did come forward, likely to need planning permission & entertainments licence. |
| PP5 | Cherry Hinton Hall ground improvements (phase 2) | £750k - £1 million | £400k of developer contributions has already been approved for this project prior to devolved decision-making. Bids for other funding will be made to supplement this to enable the delivery of key grounds improvements. Premature/not appropriate to consider further developer contributions funding at this stage. |
| PP6 | Open Spaces Centre on Jesus Green / Midsummer Common | Proposal not yet developed | Needs to be considered in the context of the project to redevelop Rouse Ball Pavilion. Not yet clear whether this would be eligible for developer contributions (or, if so, which type). |

| No. | Project ideas | Funding request | Commentary |
|---------------------|--|---|--|
| PUBLIC ART | | | |
| PP7 | More funding for the 'Cambridge Rules' project on Parker's Piece | £27k more (add to existing £88k) | Marking 150 years of FA rules is already a 1 st round priority. The extra funding (available) would increase the project budget & allow fresh public art options to come forward for consultation. |
| PP8 | Far East Prisoners of War Memorial (public art) | £75k-£150k (ball park) | Insufficient public art funding for this project. |
| PP9 | Expansion of Cambridge Arts Theatre front of house space | Contribution towards £4m cost | Not eligible for funding, which is for the delivery of public art by an artist, not for infrastructure and facilities. |
| PP10 | Improved facilities and premises for the Arts | Not clear | Same comments as for PP9. |
| PUBLIC REALM | | | |
| PP11 | Lighting on Parker's Piece | £39k contribution to overall scheme | Earlier consultation showed 76% support lighting. Would help to address community safety concerns on Parker's Piece. |
| PP12 | Riverside public realm improvements: next phase | £750k - £1 million for next section | Estimate based on the next section up to the Riverside Bridge Insufficient public realm funding for this project. |
| PP13 | Improve arterial road streetscape | Need clarification – the proposal is too broad to put a budget to it. | Improvements from Coldham's Lane bridge to Sainsbury's roundabout (East Area) are likely to go forward without developer contributions funding. The county council is keen to take this forward using maintenance funding. |
| PP14 | Improve the Leisure Centre public square | Not clear | Land is in private ownership. Insufficient public art and public realm funding available even if this was seen as a priority. |

5. Overview of the second round progress so far

5.1 This section considers:

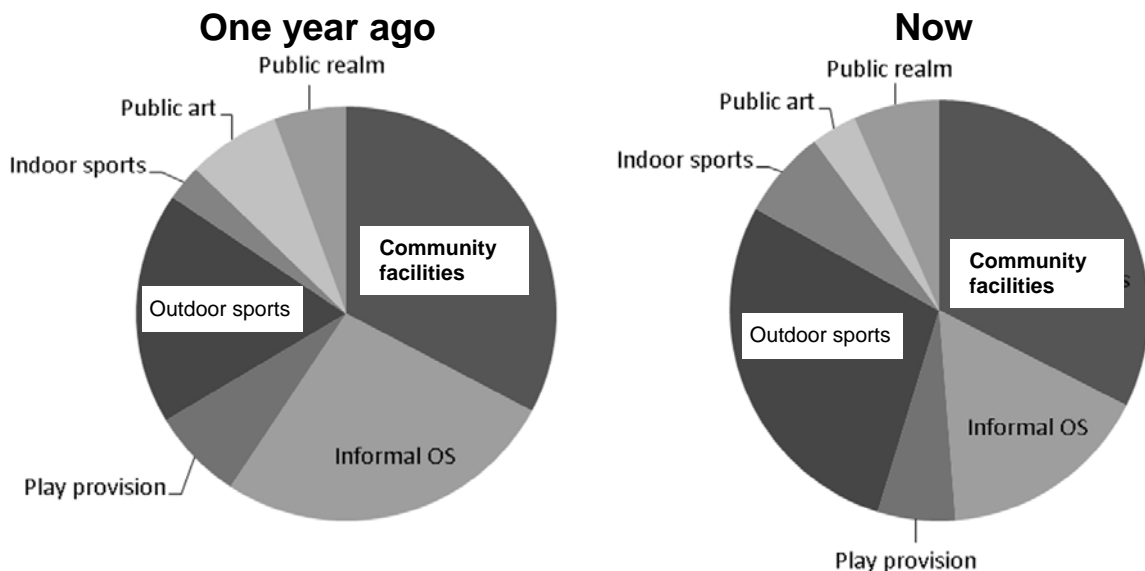
- the availability of developer contributions funding across the city-wide and devolved programmes (paragraphs 5.2 and 5.3);
- likely requests for developer contributions from the city-wide fund to supplement devolved funds for local projects (paragraphs 5.4-5.5);
- key issues and recommendations to be reported to the Community Services Scrutiny Committee meeting on 10/10/13 (paragraph 5.6);
- consultation, engagement & decision-making (paragraphs 5.7-5.9).

5.2 The following table puts the developer contributions funding available (prior to the second round) in the city-wide fund in the context of the amounts devolved to the area committees. (See bottom of Appendix B for a list of devolved contributions with expiry dates before 2017.)

Table 4: Availability of city wide and devolved contributions (Aug '13)
(Amounts rounded down to nearest £25k)

| Contribution type | City-wide | North | East | South | West/Central |
|----------------------|-----------|-------|-------|-------|--------------|
| Community facilities | £100k | £200k | £250k | £125k | £300k |
| Informal open space | <£25k | £0 | £150k | £175k | £150k |
| Outdoor sports | £275k | £50k | £150k | £150k | £225k |
| Indoor sports | £50k | <£25k | £75k | <£25k | £50k |
| Play provision | <£25k | <£25k | £50k | £25k | £75k |
| Public art | £25k | <£10k | £50k | <£10k | <£10k |
| Public realm | £100k | 0 | £75k | 0 | £25k |

5.3 It is important to recognise how the availability of contributions has changed over the last year and what this means for the choice of second round priorities. See Appendix F for more details.



- a. Whilst over £1.5 million of off-site developer contributions (including £550k to local priorities) was allocated to first round priorities, over £1 million has been received across these contribution types. At the start of the second round, around £3 million was available overall.
 - b. More payments are expected as contributions from existing S106 agreements are triggered. For example, over £600k of agreed payments have recently been requested from a major development in South Area (but these cannot be counted until received).
- 5.4 The second round, area committee short-listing reports have generated useful discussions about how to make best use of the devolved funding available. It has become clearer that there is not enough funding to take forward all the suggestions identified and that tough decisions about priorities will have to be made.
- a. The Area Chairs and others have asked whether further funding would be available from appropriate categories in the city-wide fund to support local priority projects: in the first round, the East & North Areas were given supplementary play provision funding to free up local contributions for priority projects for local play improvements.
 - b. Planning officers advise that, if the relevant Executive Councillors wished to take up this option, the most appropriate way of doing this now would be to return to an area committee those contributions from that same area which previously accrued to the city-wide fund (as part of the 50:50 split of developer contributions from major developments permitted by the Planning Committee).
- 5.5 Views on this principle would be welcomed, particularly in the context of recommendation 2.4. If it was acceptable, an immediate option for the Executive Councillor for Public Places would be to consider the North Area Committee's needs for informal open space contributions.
- a. After the first round (when £110k of these contributions were allocated), there are currently none left in the devolved fund. This could rule out not only open space projects in the second round but also play area improvements involving the need for landscaping (funded from informal open space contributions).
 - b. There are around £15k-£25k of city-wide informal open spaces from the North Area allocated to strategic, first round priority projects that could be replaced by the same amount of unallocated city-wide funds from other areas.
- 5.6 Given the inter-dependencies between Public Places and Community Well-being (not least outdoor sports and community facilities uses linked to open spaces), Appendix D draws this Committee's attention to the strategic project ideas and issues to be reported to the Community Services Scrutiny Committee on 10 October.

- a. The recommendations to the Executive Councillor for Community Well-being (eg, to increase the overall city council contributions for the redevelopment of the Rouse Ball Pavilion by £55k to £250k) are particularly relevant in the context of the Environment Scrutiny Committee's agenda item on the Rouse Ball Pavilion consultation.
- b. The consultation on the Sports Strategy is now taking place this autumn, rather than last summer as originally planned. As a result, it is proposed to defer short-listing strategic sports ideas until the draft Sports Strategy (with its updated analysis of needs for sport facilities) is ready to be reported to the Community Services Scrutiny Committee in March 2014. This would also allow:
 - more time for further sports facilities contributions for the city-wide fund to arrive (eg, more than £125k is expected soon arising from the major payment mentioned in paragraph 5.3b);
 - officers to review current allocations to existing projects to explore whether any more contributions could be freed up;
- c. This could be particularly helpful given that (in view of paragraph 5.4) some councillors have asked whether devolved funding for sports facilities could be supplemented by city wide-funds too. In the South Area, for example, provisional estimates of the costs of project ideas suggest that its devolved funding for outdoor sports facilities could be three times over-subscribed (and community facilities over four times). Local Members are concerned that this might mean that it may not be possible to take forward popular proposals (substantiated by needs) for new or refurbished sports pavilions, which could require funding from both categories. Similar concerns are also likely to be raised by the North Area Committee, which only has around £50k of devolved outdoor sports funding.

5.7 Whilst a lot of progress has been made since last June, officers are particularly mindful of the need to develop consultation and engagement with harder-to-reach groups. Even though some steps forward have been made, more could be done in future.

- a. As part of this summer's 'refresher' consultation, a range of equalities/diversity umbrella organisations were invited to have their say on project ideas for the use of developer contributions. A number of these groups confirmed that they had publicised the consultation on their websites to encourage people to reply direct.
- b. Appendix D highlights feedback received from the city's Disability Consultative Panel.

Officers are keen to explore further opportunities for meetings (involving councillors) with equalities/diversity groups and umbrella organisations.

- 5.8 Officers also recognise opportunities to develop the devolved decision-making process in other ways.
- a. Some community groups have fed back that they would appreciate more time for providing comments and updates. They have also asked for a more notice about the timing of future rounds of devolved decision-making.
 - We would like to thank all those who took the time to put forward their views in the recent Developer Contributions consultation.
 - The need for more information will be taken on board, not least with further Developer Contributions newsletters.
 - As highlighted in last June's report to this Committee (page 22), a third priority-setting round is envisaged, possibly next autumn. The council will need to take stock of the second round process and available resources and developer contributions before detailed arrangements for this third round can be announced.
 - b. Further needs analysis, based on 2011 Census data and other demographic and mapping information will be developed for future reports and priority-setting rounds. This sort of information has already been incorporated into some reports for the North Area, drawing on information from the county council's Cambridgeshire Insight and Cambridgeshire Atlas websites.
 - c. Managing expectations continues to be important, not least given some suggestions from consultees for multi-million pound projects. Throughout the last year, the council has communicated clear messages about the (limited) availability of developer contributions, the need for priority-setting and tough decisions and the importance of making sure that the overall programme of projects is manageable and achievable within available staffing capacity. That local residents and community groups are keen to champion particular proposals is welcomed, but officers are mindful that realistically not all proposals can be considered in this second round. Officers will continue to communicate these messages.
- 5.9 The report to the Environment Scrutiny Committee last June had envisaged that there might need to be a two-stage process of short-listing and priority-setting for strategic project ideas, similar to the approach being taken for the area committees in the second round. However, the current recommendations in the reports to the Environment and Community Services Scrutiny Committee in October would seem to could make follow-up reports in January unnecessary. That said, as pointed out in paragraph 5.6b, officers have in mind a further report to the Community Services Scrutiny Committee in March 2014 to address the possible short-listing of strategic sports facility proposals in the context of the draft Sports Strategy for 2014-17.

6. Implications

- 6.1 Financial implications: The importance of ensuring that priority projects are affordable within the devolved contributions available has already been stated in paragraph 4.1.
- 6.2 Staffing implications: These priority-setting recommendations take account of the need to ensure that the projects are deliverable within the staffing capacity that is available to take forward the range of priority projects (including those identified by the area committees' local priorities) and other on-going/approved schemes. The overall programme of developer contribution-funded projects will also need to take account of the work arising from further grounds improvements at Cherry Hinton Hall in the short to medium term which, as a project currently 'on-hold' on the council's Capital Plan, is outside the second round process for local and strategic priorities.
- 6.3 The implications of the Cambridge Rules and Parker's Piece lighting projects (featured in recommendations 2.1 and 2.2 of this report) are addressed in the separate project appraisals elsewhere on this agenda.
- 6.4 The actions in the updated Equality Impact Assessment for developer contributions and devolved decision-making (January 2013) have informed the steps taken so far in engaging with harder-to-reach groups (see paragraph 5.7).

7. Conclusions

- 7.1 It is little more than a year since the implementation of devolved decision-making commenced with area consultation workshops. A lot has been achieved in that time, most importantly evidenced by more and more projects coming to completion. There has been a learning curve for everyone, which still continues. The experience of implementing the first round has enabled officers to sharpen the process for the second round. There will be further opportunities to develop this approach and there is the prospect of further priority-setting rounds to pick up emerging project ideas that need some further scoping.

8. Appendices

- A. Key features of the process for second priority-setting round
- B. Developer contributions with specific conditions
- C. Summary of consultation feedback on strategic project ideas (Public Places)

- D. Summary of consultation feedback from the city's Disability Consultative Panel
- E. Outline of report to Community Services Scrutiny Committee on developer contributions: second round priority-setting for community facilities and outdoor & indoor sports categories
- F. Commentary on analysis of available developer contributions

9. Background papers

The following reports on developer contributions and devolved decision-making were used in the preparation of this report.

- 'Second round short-listing' reports to Area Committees: West/Central (5/9/13); East (12/9/13); South (16/9/13), North (3/10/13).
- 'Update and proposed next steps' report to Environment Scrutiny Committee – 6/6/13
- 'Options for the use of city-wide developer contributions (first round)' report to Community Services Scrutiny Committee – 17/1/13
- Updated Equality Impact Assessment on developer contributions and devolved decision-making, January 2013.

This and other background information can be found on the Council's Developer Contributions web page (www.cambridge.gov.uk/S106).

Also:

- Responses on strategic project ideas relating to Public Places from the Developer Contributions 'refresh' consultation, summer 2013.
- For the county council's Cambridgeshire Insight web pages see www.cambridgeshire.gov.uk/business/research/Social+Classification.htm

10. Inspection of papers

To inspect the background papers or if you have a query on the report please contact:

Author's Name: Tim Wetherfield, Urban Growth Project Manager
Author's Phone no: 01223 – 457313
Author's Email: tim.wetherfield@cambridge.gov.uk

Key features of the process for second priority-setting round

1. This round of devolved decision-making has a two-stage process for: (a) producing short-lists of options for further consideration (Sept/Oct 2013) and (b) selecting project priorities based on further information compiled for each of the short-listed options (late 2013 or early 2014).

| Committee | Short-listing | Priority-setting |
|-------------------|---------------|------------------|
| West/Central Area | 05/09/13 | 14/11/13 |
| East Area | 12/09/13 | 28/11/13 |
| South Area | 16/09/13 | 13/01/14 |
| North Area | 03/10/13 | 06/02/14 |

2. The area committees can choose their local short-lists and priorities from the lists of project ideas generated by the area consultations last autumn and refreshed during summer 2013 through a consultation exercise to seek updates on proposals and fresh suggestions.
3. No time limits are being set for the project ideas that can be considered, allowing area committees to identify projects for medium and long-term delivery. Target timescales for project delivery will be set for individual priority projects when the proposals are appraised.
4. To keep the delivery of second round priorities manageable, each area committee is asked to set as many local priorities as it has wards, plus the option of another project grant-funded from developer contributions. The number of options on the short-list could be double this. Provided there is sufficient devolved funding available in the appropriate contribution categories, it is up to the area committee to decide which projects to prioritise.

| Stage | What it considers | Outcome |
|-------------------|---|---|
| Short-listing | Top-level summary of all relevant, eligible ideas. | Identifies short-listed options: 8 each for South & West/Central areas, 10 for North & East areas |
| Priority setting | High-level profiles of short-listed options (say, up to A4 page each) | Sets priorities: 3 plus 1 (grant) for South & West/Central; 4 plus 1 for North and East areas |
| Project Appraisal | Detailed proposals for individual prioritised projects | Appraisal approved so that project procurement and delivery can follow |

5. Second round priority projects are likely to be developed and delivered from April 2014 onwards, once first round priority projects have been completed.

Developer contributions with specific conditions

Most contributions collected by the council are for providing or improving or better access to facilities in Cambridge related to particular contribution types. Some S106 agreements stipulate more specific conditions. Here are some examples (figures rounded to the nearest £500).

CITY-WIDE CONTRIBUTIONS IN THE PUBLIC PLACES PORTFOLIO

Informal Open Space contributions

- £1,000 to be contractually committed by January 2023

Provision for Children & Teenagers (play area) contributions

- £3,000 to be contractually committed by November 2017
- £6,500 to be contractually committed by January 2023

Public Art contributions

- £3,000 to be contractually committed within 10 years of last installment

Public Realm contributions

- £9,500 to be contractually committed by July 2015
- £89,500 to be contractually committed by July 2017
- £21,500 to be contractually committed by May 2019

Some of the agreements listed above may also have devolved amounts due to be contractually committed by the same expiry date.

DEVOLVED CONTRIBUTIONS WITH EXPIRY DATES BEFORE 2017

These have to be contractually committed before the dates shown. The intention is that these contributions will be amongst the first to be allocated to appropriate second round priorities set by the area committees.

| Area | Type | Expiry date | Value |
|--------------|----------------------|---------------|---------|
| North | Play provision | April 2015 | £1,500 |
| North | Community facilities | June 2015 | £60,500 |
| West/Central | Community facilities | July 2015 | £4,000 |
| East | Community facilities | January 2016 | £500 |
| North | Community facilities | November 2016 | £3,000 |
| North | Indoor sports | November 2016 | £1,500 |
| North | Play provision | November 2016 | £1,500 |
| West/Central | Play provision | December 2016 | £2,500 |

Note: this list does not include contributions already allocated to existing projects/programmes, which are being taken forward.

Summary of consultation feedback on strategic project ideas relating to Public Places

| | |
|------------|--|
| PP1 | Turn Coleridge lakes into a country park/nature reserve |
|------------|--|

Camlakes: Opening the lakes would benefit the city's image as a great place to live and would be a unique and accessible natural area where residents could rest and relax. It would provide: an outdoor activities/water sports centre (potentially lucrative); great opportunities for swimming, jogging, walking, biking and rowing); enhanced wildlife habitats; and an educational opportunity/resource for schoolchildren for nature studies. The potential benefits of making this a major asset to the city outweigh the challenges. To do it properly, the costs could run into millions. Initial research (could cost £37k) is needed to know what the possibilities are.

Friends of Cherry Hinton Brook: Policy 15 of the draft Local Plan suggests that this area could become an urban country park. This will take some time, but S106 funding could ultimately be used to help. We are very supportive of the idea of an urban country park provided that the importance of the area to wildlife is still recognised and that activities developed there take the nature conservation values of the area into account.

TH: There is a desperate need to be able to reconnect with nature through wild areas, especially for children.

JS: Most green spaces in the city are over used. More are needed. Not all green space should be open to the public, to ensure biodiversity benefits.

Officer notes: The possibility of turning the lakes south of Coldham's Lane into a country park/nature reserve is addressed in the draft Local Plan. As the proposals are still to be tested through the Local Plan process over the next two years, it would be premature for these sites to be considered for funding now. Please also note that: (a) developer contributions cannot be used to fund stand-alone feasibility studies/research; and (b) city-wide 'informal open space' contributions stand at less than £25k.

| | |
|------------|--|
| PP2 | Create green corridor: Cherry Hinton Hall to Newmarket Road |
|------------|--|

Friends of Cherry Hinton Brook: The various proposals for green corridor improvements need to be brought together and considered for funding. More signage and interpretation boards to encourage people to recognise the presence of the stream and to stop littering would, for example, be useful.

JS: May be of some benefit, but the detail is not clear.

Officer notes: The current low level of city-wide informal open space contributions means this proposal cannot be considered in the 2nd round. Other grant funding sources could be available for information boards.

| | |
|------------|---|
| PP3 | Improve pathways on Midsummer Common |
|------------|---|

JS: If this means more lighting then definitely not. If it means creating some additional paths along desire lines then there is a public benefit, particularly if little used paths are removed.

Officer notes: Creating additional paths would be eligible for informal open space developer contributions, but just improving the surface (maintenance issue) would not. There is insufficient funding in the city-wide fund for this project to be considered at this stage.

| | |
|------------|---|
| PP4 | Cambridge open air theatre (for theatre, music, dance, puppetry) |
|------------|---|

Cambridge Arts Theatre: While in favour of all public engagement with theatre in Cambridge, we are not sure an open air theatre is a high priority. There are already a number of excellent spaces for theatre (eg, Robinson College's amphitheatre, college gardens and Cherry Hinton Hall Park). Events like Strawberry Fair also offer opportunities for different kinds of outdoor theatre. An open air theatre would need management & upkeep.

Two responses in support, including TH: There is a huge appetite for outdoor arts performance. Cambridge is missing a venue that could host less expensive, smaller-scale performances.

Officer notes: Would need to establish what it would be for and level of need, as well as finding suitable site. Could need planning permission and entertainments licence. There is insufficient funding in the city-wide fund for this project to be considered at this stage.

| | |
|------------|--|
| PP5 | More funding for Cherry Hinton Hall ground improvements (phase 2) |
|------------|--|

Friends of Cherry Hinton Hall: Accept that lottery funding is highly unlikely. Wish to concentrate on which aspects of the Masterplan can be delivered most cost-effectively, using a variety of funding sources. There is scope for third party funding for: lake dredging & re-establishing water flow to rear pond; original species replanting for the orchard; play area refurbishment (some is already underway); safety measures for the car park & driveway gates; and a replacement toilet block. We would, however, request that the following remain in the S106 list of projects: a concessionary outlet/café; the creation of a music and arts performance area; new surfaces in front of the duck pond; a realigned/new path network (already partly done in phase 1); and reinstating the turning circle and parterre garden.

Officer notes: This phase 2 project is already on the 'on hold' list of the council's Capital Plan. £400k of developer contributions has already been approved for phase 2 of the grounds improvements (in January 2012). Bids for third party funding will be made to supplement this £400k. A prioritised

programme will be developed, to enable key grounds improvement schemes to be developed, appraised and delivered in the medium-term. It is unlikely that the entirety of the previously envisaged phase 2 proposals will be possible, but it would be premature to consider additional developer contributions from the city-wide funds, not least in the context of the current availability. The on-going dialogue with the Friends will continue.

| | |
|------------|---|
| PP6 | Open Spaces Centre on Jesus Green / Midsummer Common |
|------------|---|

Friends of Midsummer Common: Would be very interested in having an 'open spaces' centre with a part-time greens warden and space to develop projects and a small cafe, if one of the houses became available. There is a growing interest in wildlife on the Common.

Officer notes: This proposal needs to be considered in the context of the priority project for developing the Rouse Ball Pavilion on Jesus Green. It remains to be seen to what extent this new suggestion would be eligible for developer contribution (the revenue costs of a greens warden would not be).

| | |
|------------|---|
| PP7 | More funding for the 'Cambridge Rules' public art project on Jesus Green |
|------------|---|

£88k of public funding was allocated to this strategic priority project in the first round, to commemorate 150 years of Football Association rules. The £27k extra funding now proposed is currently available (even though Table 2 rounds this figure down to £25k). It would allow fresh public art options to come forward for consultation & provide more funding for the final scheme.

| | |
|------------|--|
| PP8 | Far East Prisoners of War Memorial (public art) |
|------------|--|

Some councillors have previously highlighted the urgency of putting in place a commemoration to these former POWs.

JS: This will have limited public appeal at a time of recession.

Officer notes: As ball-park estimates, this project idea could be delivered in the short-term (by October 2015) and cost in the region of £75k-£150k.

| | |
|------------|---|
| PP9 | Expansion of Cambridge Arts Theatre front of house space |
|------------|---|

Cambridge Arts Theatre: Seek S106 funding (public art and community facilities) towards a £4 million, four-year project to expand the theatre's Front of House spaces, creating new public areas and increasing the provision of art for the community. The project will involve creating: a small stage in the new front-of-house area for short performances; a new café restaurant; and a welcoming and more accessible frontage.

Officer notes: Public Art contributions should only be used for the delivery of the art itself by an artist. The creation of infrastructure and facilities that facilitate art in the future is not fundable by public art contributions.

| | |
|-------------|--|
| PP10 | Improved facilities and premises for the Arts |
|-------------|--|

Cambridge Arts Salon: Invest in existing arts organisations by providing studio space, exhibition space and contemporary arts projects to a range of artists in the city. We need: improved facilities; permanent premises for an arts centre in Cambridge; salaried/paid staff to run such premises & projects

Officer notes: Not fundable from public art developer contributions.

| | |
|-------------|-----------------------------------|
| PP11 | Lighting on Parker's Piece |
|-------------|-----------------------------------|

The proposal is to add lighting columns along the two diagonal paths on Parker's Piece. It would address community safety concerns. Consultation earlier this year showed 76% in favour of lighting. Alongside other funding the £39k public realm contributions would enable the project to go forward and make timely use of public realm contributions with an expiry date in 2015. See the project appraisal elsewhere on this agenda for more details.

| | |
|-------------|--|
| PP12 | Riverside public realm improvements: next phase |
|-------------|--|

One query received about what this would involve.

Officer notes: The next phase would be up to the Riverside bridge (could cost £750k-£1 million). Could be a medium term project (ie, for delivery by April 2017), but beyond the city-wide public realm contributions available.

| | |
|-------------|--|
| PP13 | Improve arterial road streetscape |
|-------------|--|

Three replies called for improvements to Coldhams Lane (incl. landscaping and tree-planting); more appropriate management of verges (not more frequent cutting); and underlined the need for improvements in East Area.

Officer notes: Proposals for public realm improvements on Mill Road are on the East Area short-list. Improvements to Colham's Lane are likely to go forward without developer contributions: the county council is keen to take this forward using maintenance funding. Verge management not eligible.

| | |
|-------------|--|
| PP14 | Improve the Cambridge Leisure Park square |
|-------------|--|

MG: Improve the Leisure Centre square (at the junction of Hills Road and Cherry Hinton Road) as a public space. It doesn't work, is uninviting and no one wants to spend time there (except teens in the evenings). With innovative design (say, changes in urban form or additions of art, fountains, trees etc), the square could draw families in and make them want to linger!

Officer notes: This land is privately owned. The city-wide funding for public art & public realm are insufficient for the sorts of improvements suggested.

Note: No specific suggestions have been made, via the autumn 2012 or summer 2013 consultation, for strategic play area provision/improvements.

Feedback from Disability Consultative Panel

Following on from the 'refresher' consultation this summer, officers recently attended a meeting of the Disability Panel in order to provide an update on developer contributions & devolved decision-making. Here is a list of ideas suggested by Panel members. As this initial meeting took place close to the publication of the report, it has not yet been possible to discuss all these ideas with relevant managers and to compile 'officer notes'.

The discussions with the Disability Panel have highlighted the constraints on how city council developer contributions can be used (eg, in terms of the availability of funding and that transport schemes or revenue costs are not eligible). That said, all the ideas are summarised here so that the Committee can be aware of them. This feedback will also be shared with the Community Services Scrutiny Committee and area committees, as relevant.

- A. More public toilets are needed.
- B. Improve paving in the centre of Cambridge (including Market Square, King's Parade, Trinity Street). There are "terrible tripping hazards".
- C. Improve the pavement on Gwydir Street (Petersfield ward), which is "almost unwalkable".
- D. Need more pedestrian crossings (eg, on Tennison Road, Bridge Street, Trinity Street, Four Lamps (particularly needed for bus passengers getting off on Victoria Avenue).
- E. Have one day where the central area of Cambridge and Mill Road are dedicated for pedestrians only, who can move around freely - not feeling threatened by any vehicles or cycles. *[Already reported to West/Central and East Area Committees, but not eligible for developer contributions]*
- F. Could the Market Square be cleared every evening?
- G. Bench designs are not all suitable for ambulant disabled people. There needs to be a variety of styles of benches provided (eg, some with arms and some not), to help people to sit down and get up again. *[Already passed on to officers leading on new benches for West/Central Area]*
- H. Need a central community hub for disability groups, including office space & storage for disability charities (some of which are struggling to afford their own office space) and interview and meeting rooms.
- I. Turn the Howard Mallett Centre back into a community centre
- J. Provide more support for the running of Dial-a-Ride.

The possibility of following up this initial meeting on the possible uses of developer contributions with further discussions involving councillors has been mentioned to the Disability Panel. There are also opportunities for meetings with other equalities/diversity groups and umbrella organisations.

Outline of report to Community Services Scrutiny Committee: Developer contributions: 2nd round priority-setting (10/10/13)

Recommendations for the Executive Councillor for Community Well-being:

- Allocate an additional £40k (community facilities) & £25k (outdoor sports/formal open space) to the Rouse Ball Pavilion development (making £250k allocation in total) – as an immediate priority allocation;
- Prioritise now a £25k outdoor sports grant for cricket nets at Netherhall School (for community use, benefitting not just the South Area).

Availability of city-wide developer contributions

Currently £100k for community facilities; £275k for outdoor sports facilities (including formal open space contributions); & £50k indoor sports facilities. Amounts rounded down to nearest £25k. Note that a further £125k+ of city-wide outdoor sports facilities contributions are expected shortly.

Strategic project ideas (Community Well-being)

| Summary of consultation feedback and commentary on: | | Overall costs |
|---|--|-----------------|
| 1 | Further contribution towards Rouse Ball Pavilion development | £500k+ |
| 2 | Ice rink for Cambridge | £multi-million |
| 3 | Create a velodrome / professional cycling track | £multi-million |
| 4 | 3G pitch at Cambridge Rugby Club | £400k-£500k |
| 5 | Upgrade changing rooms (including female facilities) at Cambridge Rugby Club | £600k |
| 6 | Initiatives to extend season at Jesus Green pool | To be clarified |
| 7 | Cricket nets at Netherhall School lower school fields | £55k |
| 8 | Create an adult size swimming pool in the North Area | £1.5 million + |
| 9 | Expansion of Cambridge Arts Theatre | £4 million |
| 10 | Open Spaces Centre on Jesus Green/Midsummer Common | Not yet clear |

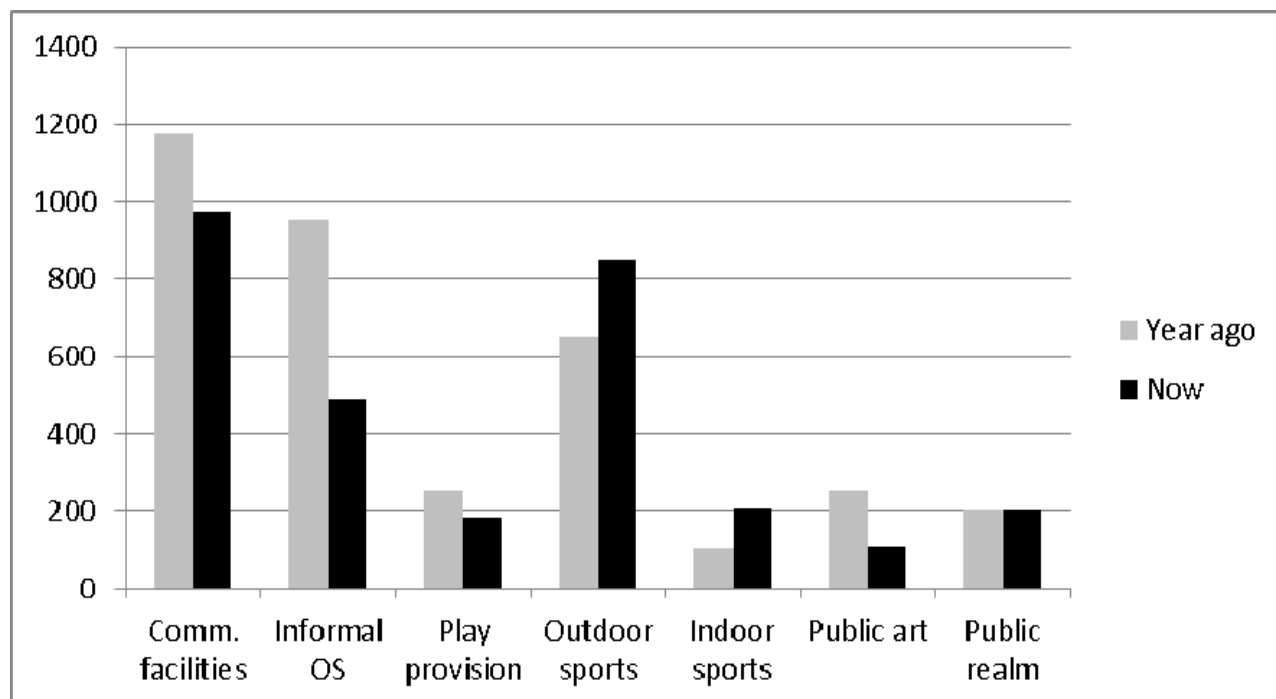
Key issues

- Unless there are early opportunities, need to defer short-listing proposals for sports facilities until the Sports Strategy (with an assessment of needs) has been developed (March 14).
- Whilst the sports facilities funding available is considerable, there is not enough to take forward all the suggestions. Priorities will need to be set.
- Grant-funding is likely to represent a contribution towards wider costs of proposals, which will need to demonstrate how the rest will be funded.

Commentary on analysis of available developer contributions

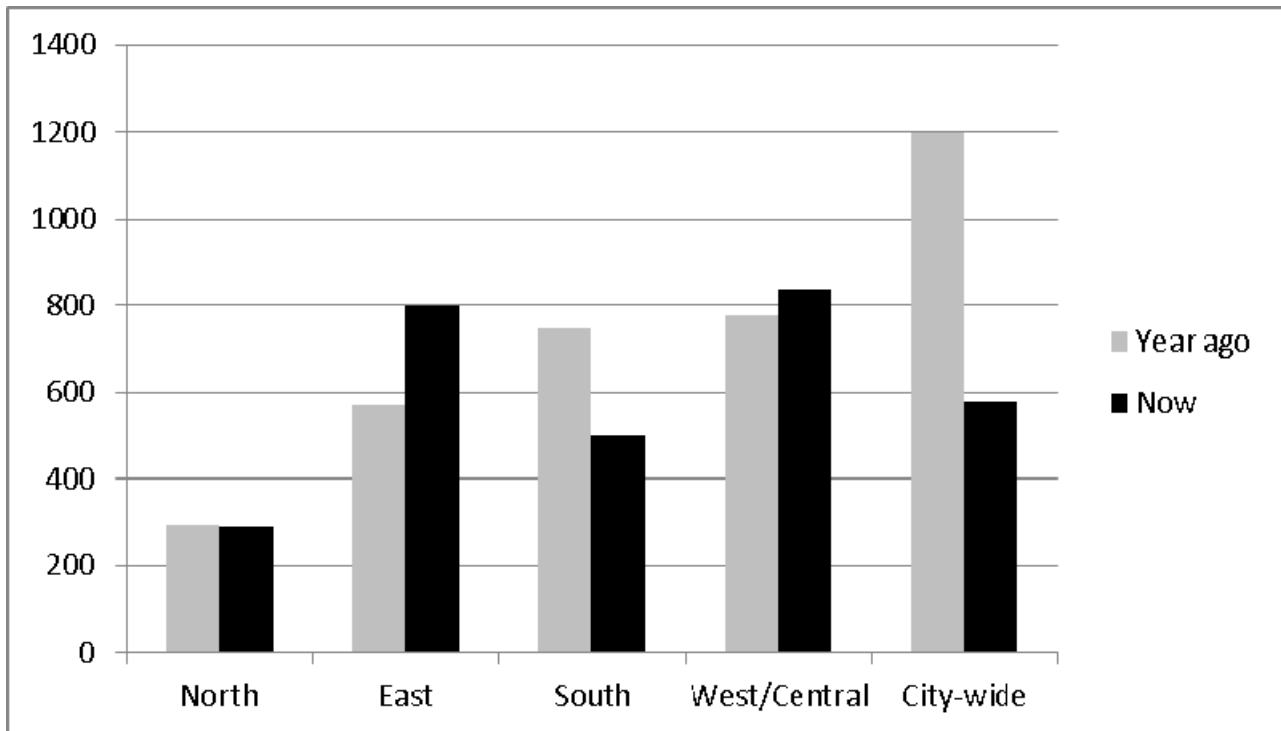
The commentary is based on a comparison of the latest funding availability (see in Section 5 of this report) with the financial position prior to first round priority-setting, as reported to the Community Services Scrutiny Committee in January 2013 (Appendix C).

1. Changes across contribution types (overview of city-wide and devolved funding)



- Outdoor sports (and formal open space) contributions, largely untouched in the first round, have accumulated (around 30% more overall).
- Indoor sports facilities contributions, which were introduced as a category in 2010, have trebled, albeit from a fairly low base;
- Whilst community facilities contributions have been halved, a significant amount (over £650k overall) is still available.
- The East, South and West/Central areas continue to have substantial amounts of informal open space contributions available, whilst the city-wide fund has little left and the North Area has none available.
- The levels of funding available for play provision and public art have reduced significantly following allocations to recent and on-going play area improvements.

Changes across devolved and city-wide funds



- a. Given the major investment in strategic priority projects in the first round, the size of the city-wide fund has more than halved, although this is set to be boosted by 50% of the expected major payment referred to in paragraph 5.3b of the main report.
- b. Over the last year, there has been an increase in the overall amounts of devolved funding available to East Area (up 25%) and West/Central Areas. The overall levels of South Area devolved funding are set to be replenished by the other half of the expected major payment.
- c. The devolved funding for North Area has continued at much the same comparatively low level as a year ago. The variations in devolved funding across areas broadly reflects the levels of development in each area and previous project spend and allocations in each area.

An initial analysis, reported to the North Area Committee on 3/10/13, suggests that there may be an increase in the levels of developer contributions from North Area in the coming years. Legal (S106) agreements have been completed for over 40 developments in the North Area since the start of 2011 (more than in either of the South or West/Central areas).